

# ART DUNSBOROUGH SOCIETY

**Newsletter**  
**July August 2024**  
**Issue 9**

## **DATES FOR YOUR DIARY**

### **Beaches and Rocks Workshop**

Tuesday 6th August

### **September Exhibition**

Yallingup Hall

Friday 6th - Monday 9th September

### **Pastel Landscapes**

Tuesday 15th October

## **UPCOMING WORKSHOPS FOR 2024**

**Tony Windberg** Beaches and Rocks  
Tuesday 6th August  
\$90  
Material list to come

**Rayma Reany** Pastels landscapes  
Tuesday 15th October  
\$85  
Materials included

**More details about the workshops will be  
posted on the noticeboard at the DAS  
rooms**

## **WE NEED A NEW SECRETARY**

We are still looking for a replacement  
secretary

If anyone is able to help please contact  
Gail Lovelady.

You will be given plenty of help and  
support.

It is great to learn a new skill

## **Next Newsletter**

### **September/October 2024**

If you wish to submit any articles for the next  
newsletter please forward to the secretary

**NATURALIST COMMUNITY CENTRE**

**On Friday 26 July the walls at the NCC had new artwork added.**

**Thank you to everyone who helped hang the new artwork.**

**We currently have 21 pieces of artwork showcased by 9 talented members.**

**Wendy Bramley**

**NCC Curator**



**DAS Artworks brighten up the Naturalist Community Centre**



## Recent artworks exhibited at the Naturalist Community Centre



More DAS art works at the Naturalist Community Centre



More DAS ARTWORKS recently hung at the  
Naturalist Community Centre



## Dee Credaro's Sketch and draw Workshop

On Tuesday 11th June eminent local artist Dee Credaro presented an informative and fun workshop in June.

She began by describing the 3 types of charcoal: powdered, compressed and willow, their qualities and uses.

She demonstrated ways of blending, using a finger, solid or kneadable rubber.

Holding a pencil or charcoal with fingers placed on top, thumb underneath.

Approaches and methods of drawing followed. Contour drawing

(an exercise.. placing a pencil on paper then without looking or lifting it drawing an object).

Line drawing.. looking carefully at the angles of a subject.

Block sketching..looking at the shapes of an object.

Tonal sketching.. concentrating on the dark areas.

Dee introduced her model, Carol, who turned and briefly held different positions while we hurriedly sketched her.

We were then given half an hour, while Carol sat in one position, to draw her whole body, or face, using our choice of pencil or charcoal.

Silence reigned while we worked.

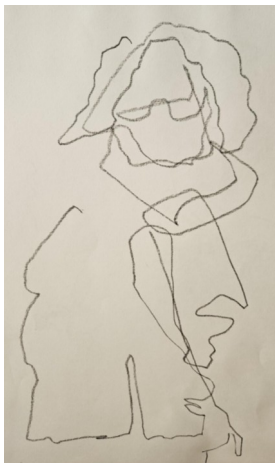
A welcome break for lunch, while Dee prepared a table of various objects she had brought from home.

We were time limited in sketching these. Again, chatting ceased.

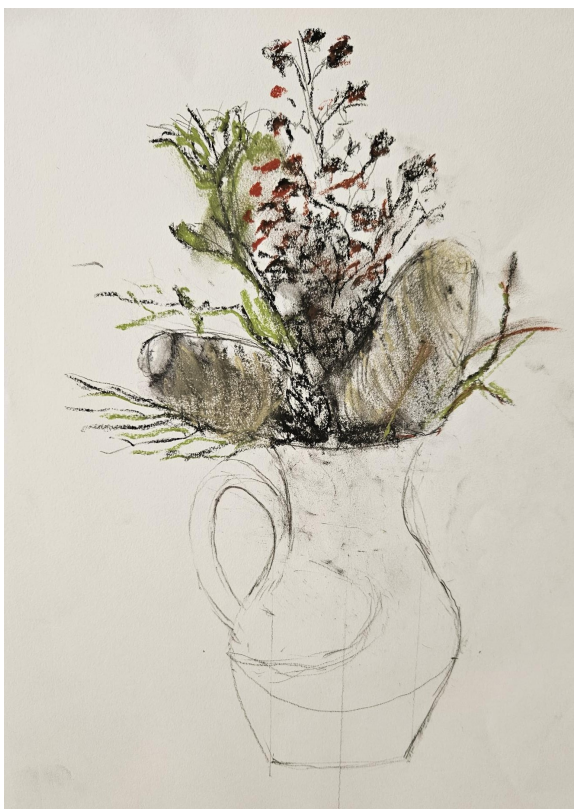
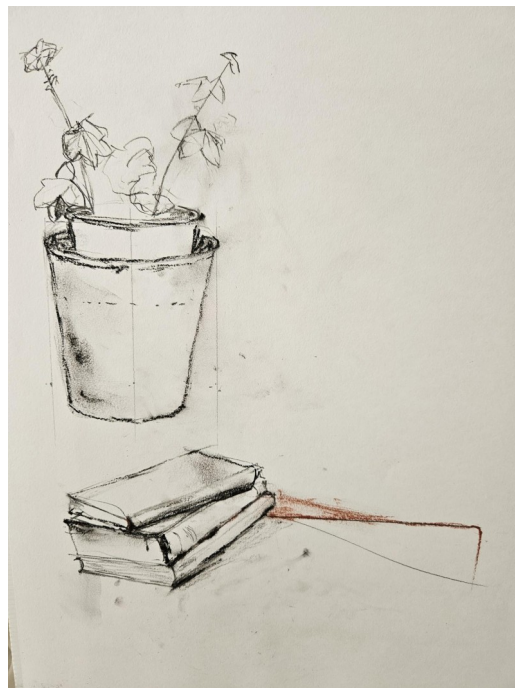
A steep learning curve.. a lot of information. We came away with a renewed awareness of the importance of 'seeing' a subject and how it's component parts relate to each other.

A very enjoyable day.

Pat Pomeroy



Sketches produced at Dee Credaro's workshop





## Preparing your artworks for exhibition by Jo Fazakerley

The calibre of art in both our January and September exhibitions has resulted in a well-deserved reputation for quality artwork at affordable costs. In each instant most of our clientele will also be visiting local commercial art galleries and so it is important that our artwork is finished to a professional standard. The Executive have asked me to provide the following guides to assist you to finish your artwork for hanging.

Unframed artworks on canvas need to have the edges of the canvas either continuing the artwork over the edge, or having the edge uniformly painted with a crisp outline for the work.



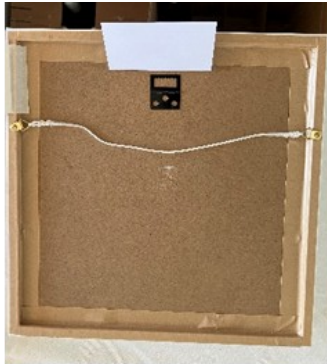
The backing of the artworks on canvas needs to be finished professionally so that dust and insects do not have a chance to nest in the back.

Artwork to the left is not acceptable

Artworks on **canvas** need to have a backing in either matt board or thin Corflute cut to size and then stapled on as per illustration right. Corflute can be purchased from Bunnings. Select a 3mm width.



Artworks on **canvas that have a frame** should have either a matt board or Corflute backing inserted and then taped around the edges to fix in place



Artworks such as **watercolour in frames** need to have the backing board taped to the frame as per illustration left.



Adhesive backing tape for artworks can be purchased from Bunnings, Spotlight, Art supply stores and Office Works.

Hanging – D Rings

Purchased from Bunnings or hardware shops should be fixed one third of the way down the back of the artwork.



Cord – Use blind cord from Bunnings or hardware shops should be fixed by a series of knots and then taped at the edge as per illustration. The cord should be tight and not protrude above the artwork.



## GREETINGS FROM BROOME

Robyn and I are here again this winter in Broome. For at least the last 7 years we have been escaping the southern winters. We have the same site at the Cable Beach Caravan Park each year and also leave some equipment there in storage, particularly the 3m x 3m gazebo that doubles as my art studio during the 2-3 month stay.

The perfect weather (15C minimum to 28/32 maximums) allows me to paint outside with no fear of rain or uncomfortable conditions and the beautiful colours of Broome and the Kimberley inspire my artistic juices.

The big blue skies, the turquoise water and the red earth are just captivating.

My only regret is that each year I miss the September Exhibition and the DAS community.

Stay safe everyone and enjoy the excitement your art brings.



My art studio



Cable Beach Sunset 40 x 50 cm



Colours of Broome

# CHINESE TRADITIONAL CALIGRAPHY

And

# PAINTING WORKSHOP

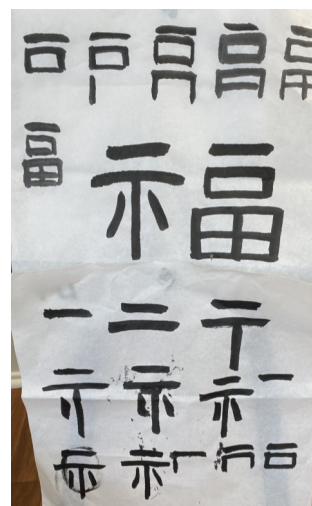
On Tuesday 9th July a lovely day was had at Jane Li's Chinese Traditional Calligraphy and Painting workshop.

During the morning session we learnt to paint Chinese symbols and the basics of calligraphy. Jane spoke in depth about the Chinese language and the manufacturing of the special rice paper we painted on.

After lunch, we learnt to paint a Cherry Blossom tree using traditional Chinese watercolour paints. After a few practice runs we then got the courage to paint directly onto the fans, Cherry Blossom on one side and the calligraphy on the other.



More pictures from Jane Li's workshop



## More pictures from Jane Li's Workshop



Our visitors from Manjimup, Fay and Paula asked us for a group photo for their newsletter.

The Chinese writing on the back of the fan is a Greeting which we learned how to form as well as some history of Chinese writing.

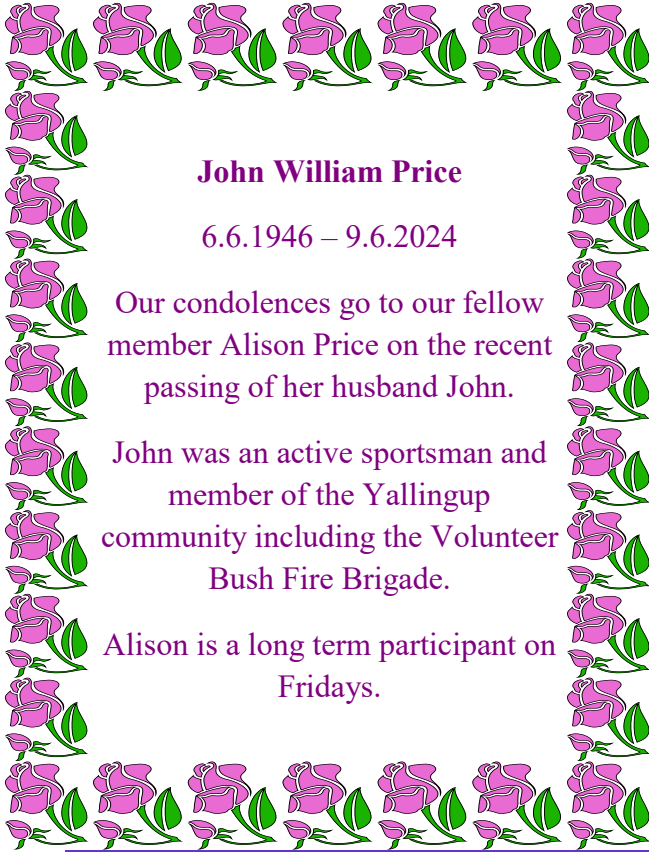
Fay sent a thank you for being part of a very interesting day at Jane's Workshop.

Both Paula and I (Fay) thoroughly enjoyed ourselves. Our Hub contact info is:

**Manjimup Arts Hub Inc., 39 Giblett St Manjimup.**

**My Hub email address is: [newsletter@manjimupartshub.com.au](mailto:newsletter@manjimupartshub.com.au)**

Please if any of you come this way email or ring me 0438 980 256 Come and have a coffee with us



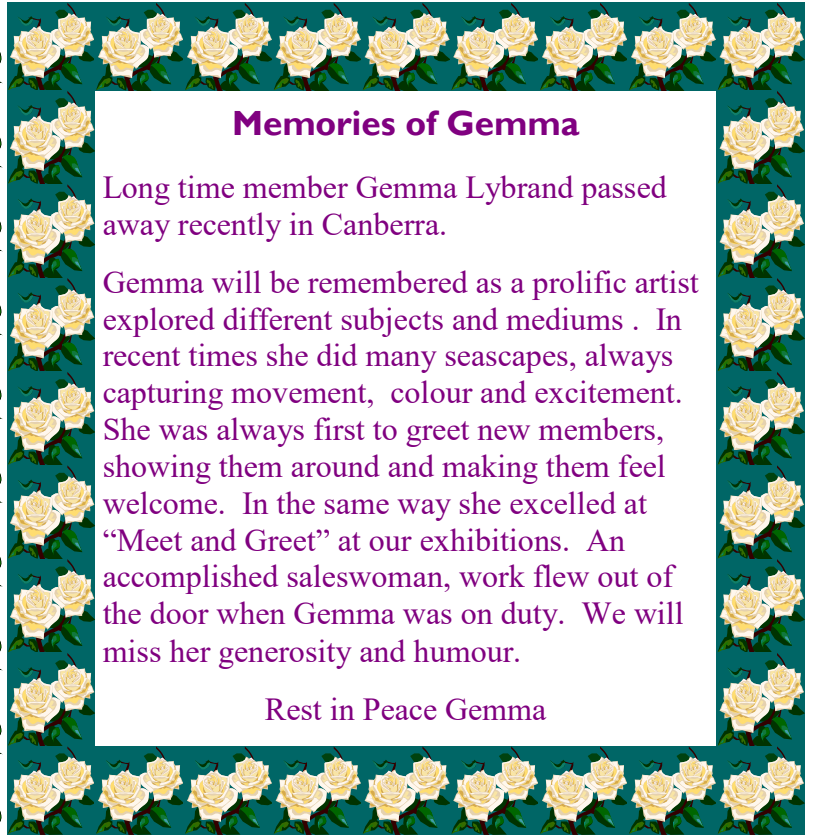
**John William Price**

6.6.1946 – 9.6.2024

Our condolences go to our fellow member Alison Price on the recent passing of her husband John.

John was an active sportsman and member of the Yallingup community including the Volunteer Bush Fire Brigade.

Alison is a long term participant on Fridays.



**Memories of Gemma**

Long time member Gemma Lybrand passed away recently in Canberra.

Gemma will be remembered as a prolific artist explored different subjects and mediums . In recent times she did many seascapes, always capturing movement, colour and excitement. She was always first to greet new members, showing them around and making them feel welcome. In the same way she excelled at “Meet and Greet” at our exhibitions. An accomplished saleswoman, work flew out of the door when Gemma was on duty. We will miss her generosity and humour.

Rest in Peace Gemma

**COMMITTEE POSITIONS 2024**

<b>PRESIDENT</b>	<b>Allan Kay</b>
<b>VICE PRESIDENT</b>	<b>Rhonda Jackson</b>
<b>SECRETARY</b>	<b>Gail Lovelady (acting)</b>
<b>MINUTES SECRETARY</b>	<b>Jo Fazakerley</b>
<b>TREASURER</b>	<b>Gail Lovelady</b>
<b>DEPUTY TREASURER</b>	<b>Liz McLeay</b>
Curator/Principal Hanger	Linda Charteris
Community Centre Curator	Wendy Bramley
Exhibition Coordinators	Pat Pomeroy and Gail Lovelady
Workshop Coordinator	Pat Pomeroy
Publicity Officer	Rhonda Jackson
Newsletter Editor	Barbara Averill
FB and Webpage Editor	Jenny Taylor
Librarian	Carol Hearle
Kitchen Manager	Gay Browne
Maintenance Officer	Liz MacLeay
Gardener	Rob Wilson and Allan Kay